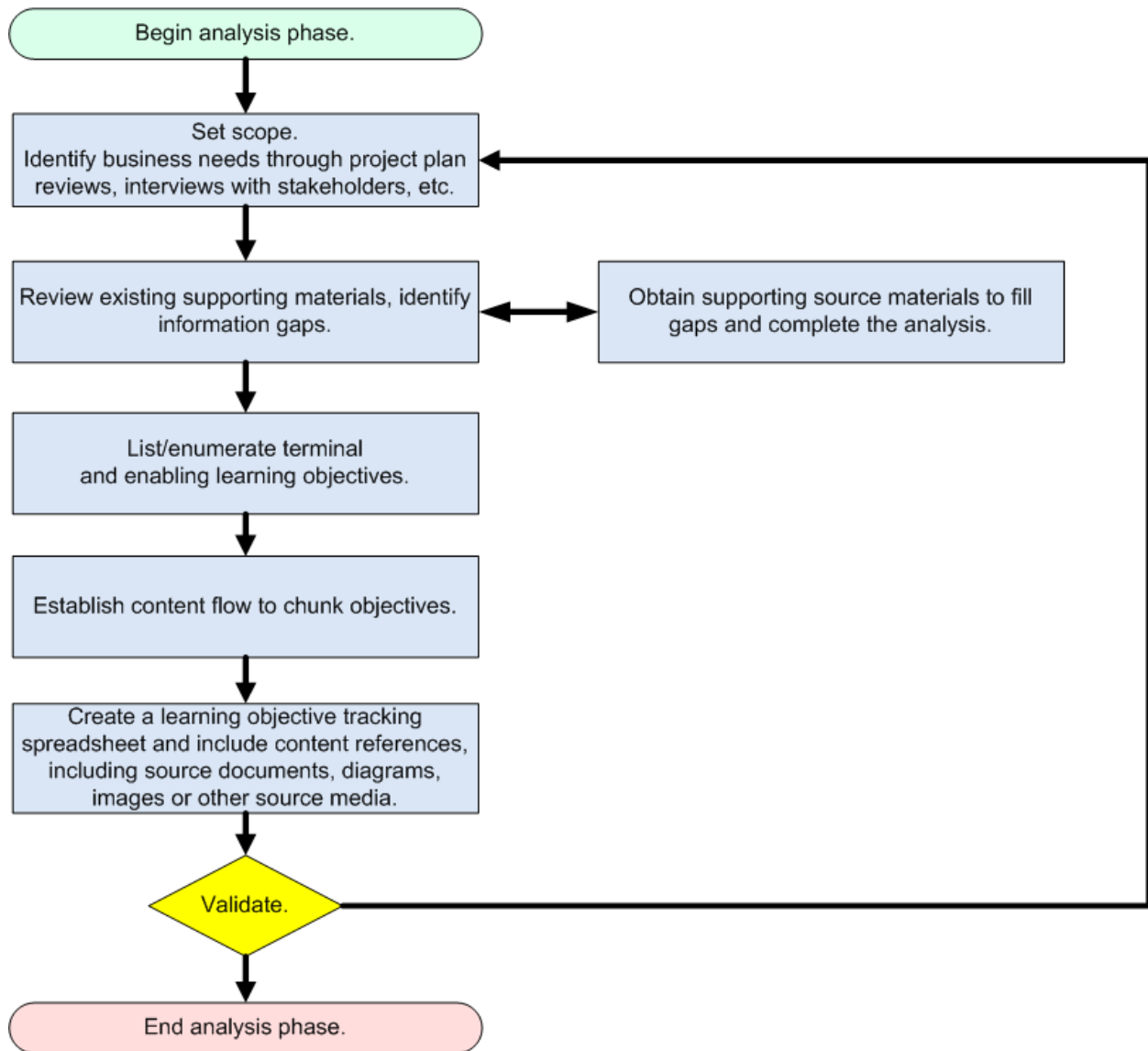
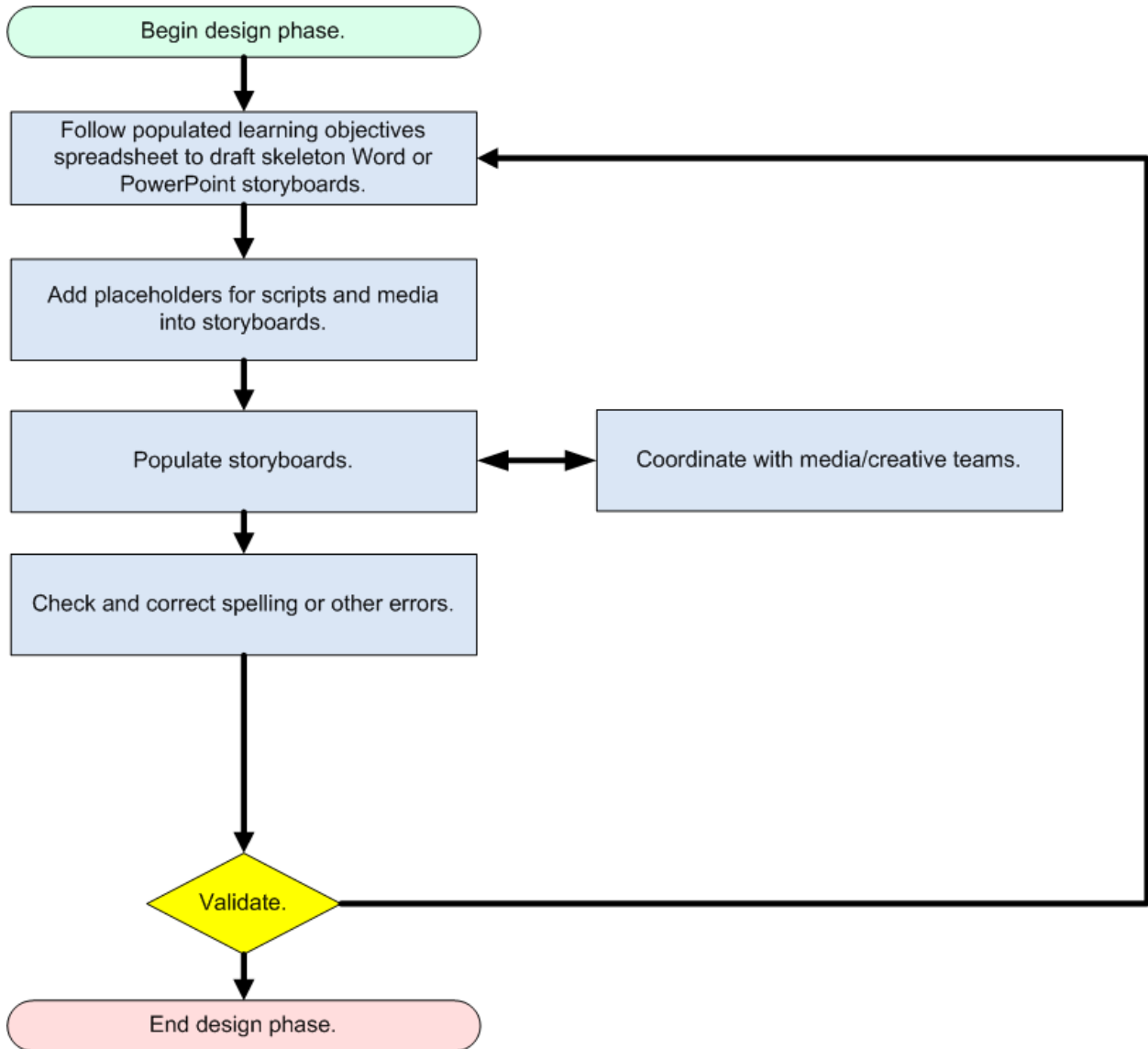


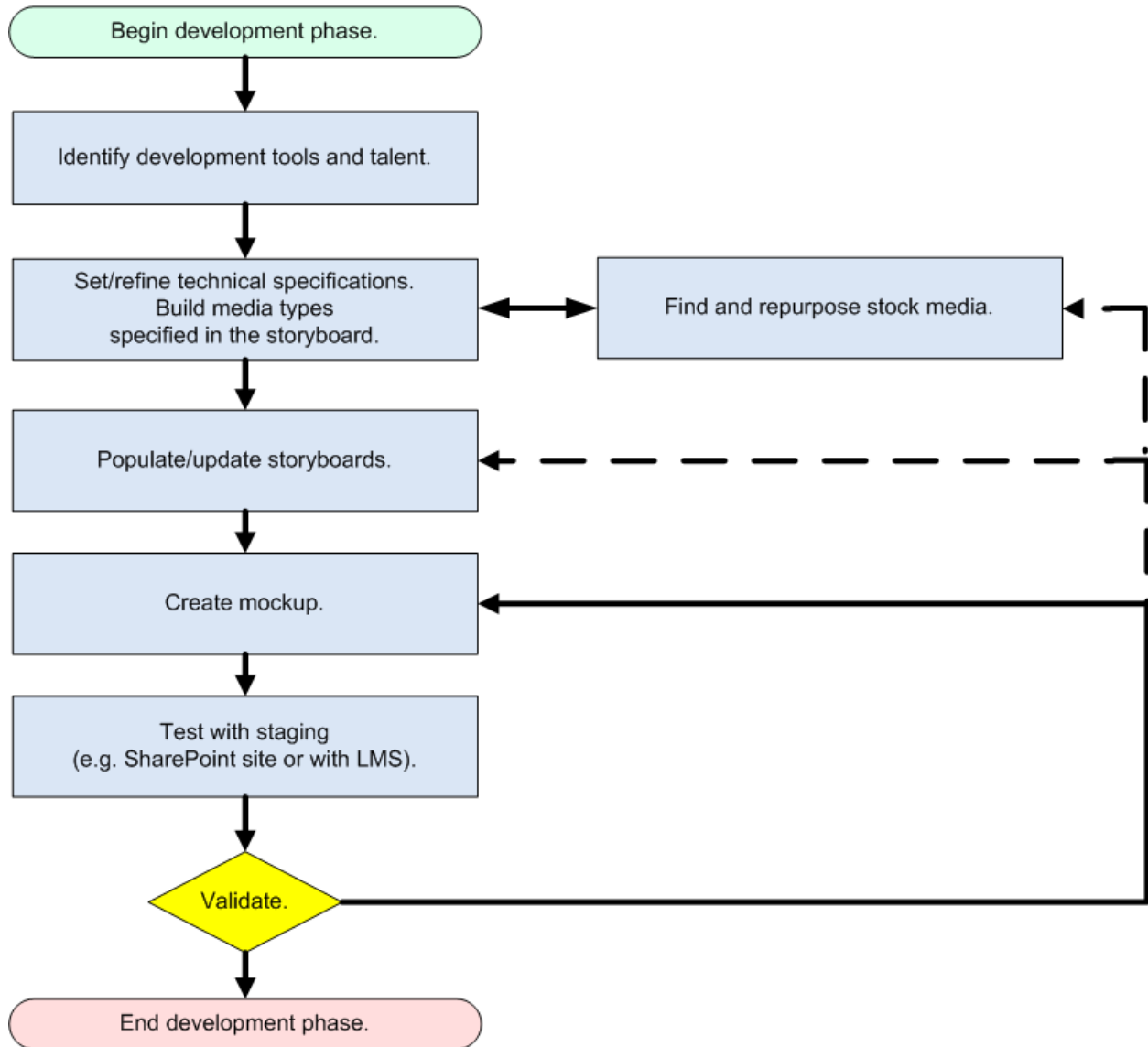
Analysis Phase



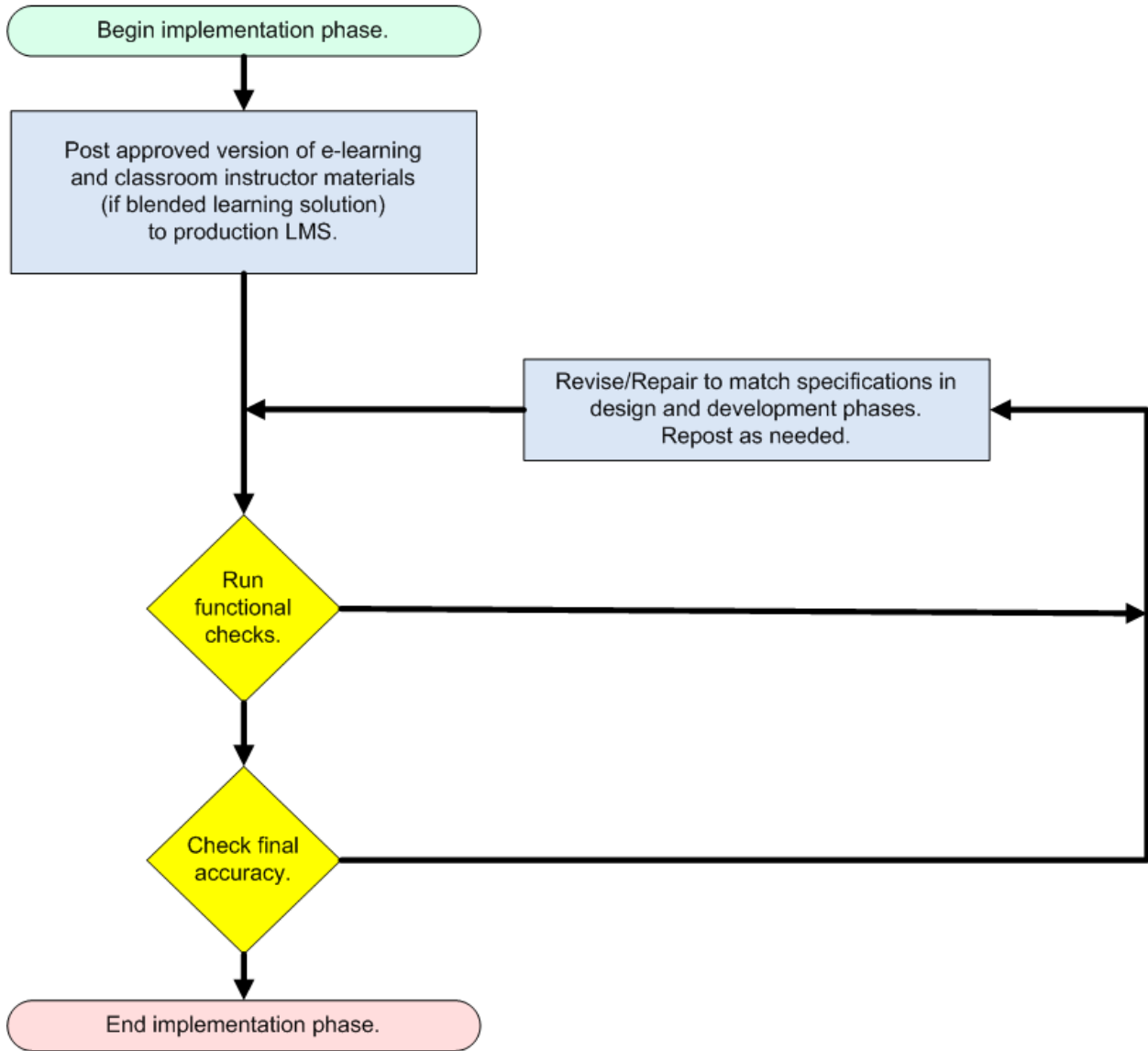
Design Phase



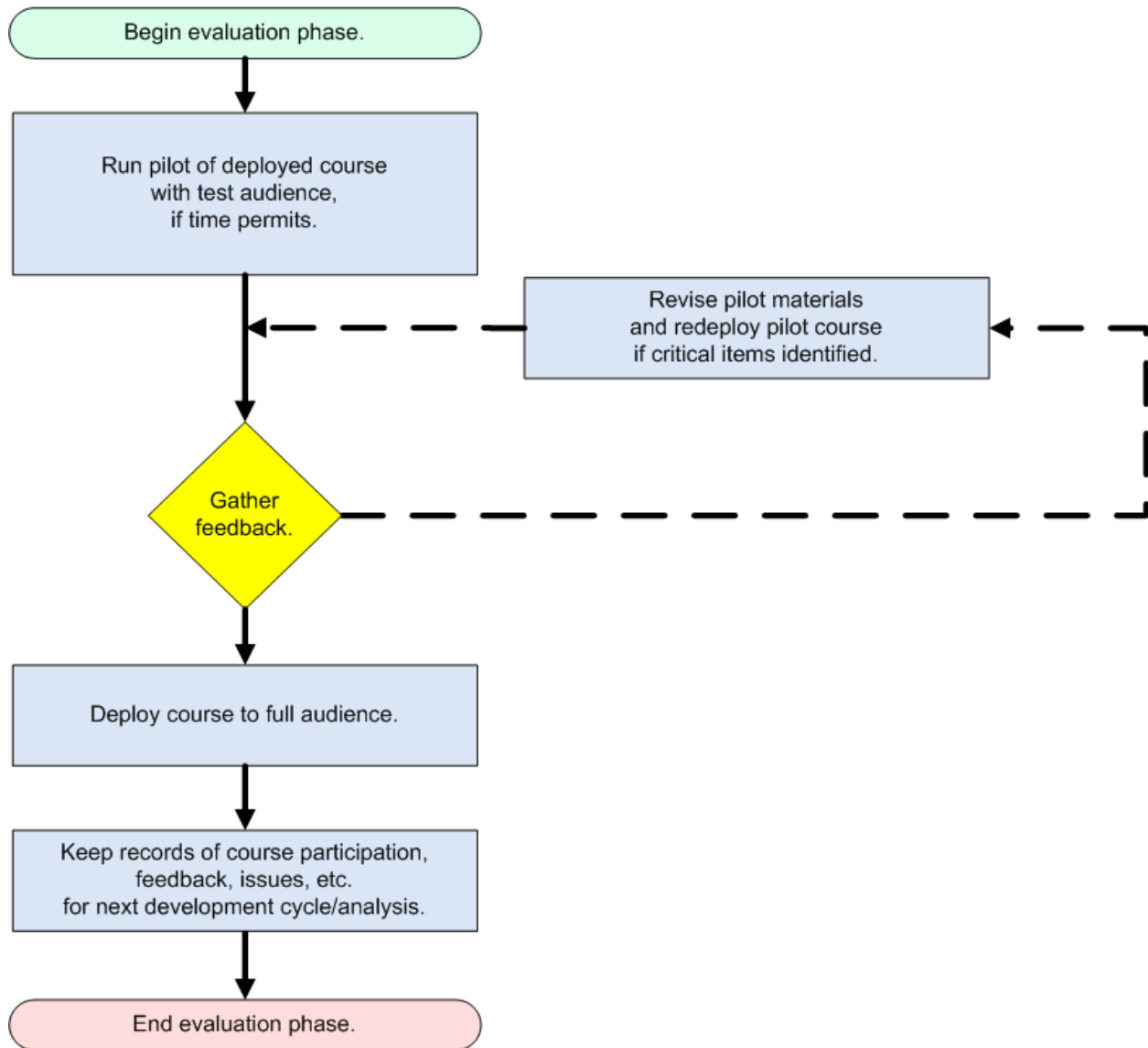
Development Phase



Implementation Phase



Evaluation Phase



Example of an Adaptive Course Structure

Course flow can be linear or adaptive, depending on the customer needs. Below is an example of an adaptive design that allows learners to explore topics at their own pace. The flow allows them to test out of parts that they already know, to save valuable time and keep them engaged with the material.

